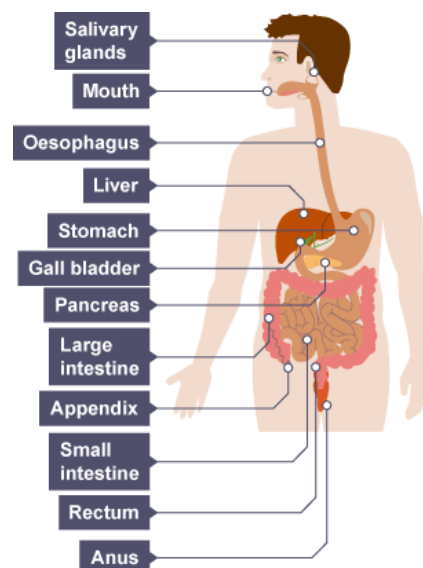
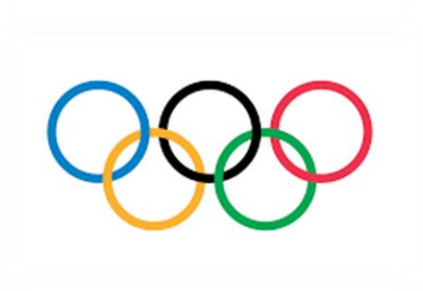




Pear Newsletter

Summer 2

Hello to all of our Parents and Carers,
Welcome back after a fabulous Whitsun week! Below is some information on what we are learning about this half term.



What we are learning about this half-term:

English – Biographies

Maths – Fractions and time

Art – Olympic mascots

D.T – Cooking from around the world

Science – Digestive system and food chains

Geography- Human and Physical features of South America

Music – To compare and perform music from Eurovision

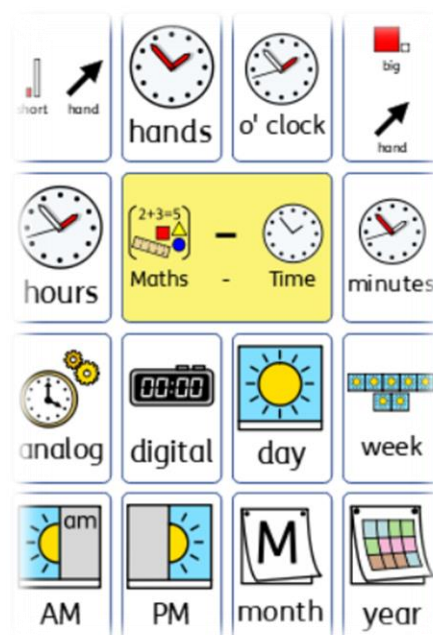
Computing – Simulations

P.E – Athletics

PSHE – Healthy Eating

JASS – Outdoor adventure

R.E – Spiritualism



Just a few reminders:

1. Our P.E day is **Tuesday**.
2. Forest school is **Wednesday** as well so children can bring Wellies in or old trainers if they have them.
3. **Friday** is always dress down Friday or Superhero Friday.
4. **Home diaries and reading diaries need to be in school every day please** – please try and read with your child every day and record in the diary (don't forget to tick the sheet at the front. 10 ticks = a book!)